

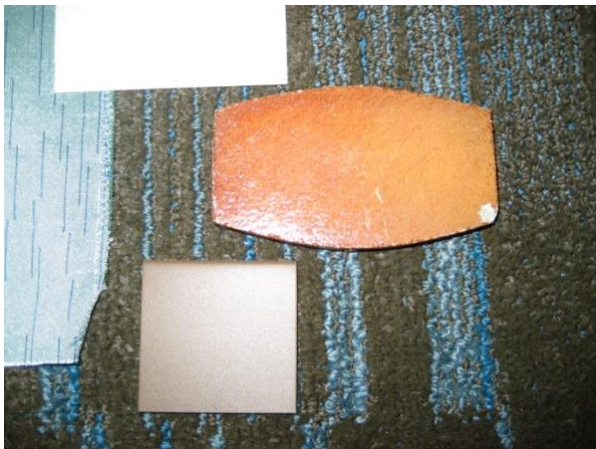
Selected Permanent Collections



Axiom Building. Photo credit - WER Architects/Planners, Little Rock, Arkansas

Acxiom Corporation, Little Rock, Arkansas - 32 Commissioned Paintings.

Acxiom is a Conway, Arkansas-based database marketing company. The company collects, analyzes and sells customer and business information used for targeted advertising campaigns. Its LiveRamp division provides data onboarding services, whereby offline data is transferred online for marketing purposes. In July 2018, advertising company Interpublic Group of Companies (IPG) announced they were buying Acxiom's Marketing Solutions business for \$USD2.3 billion. The company has offices in the United States, Europe and Asia.



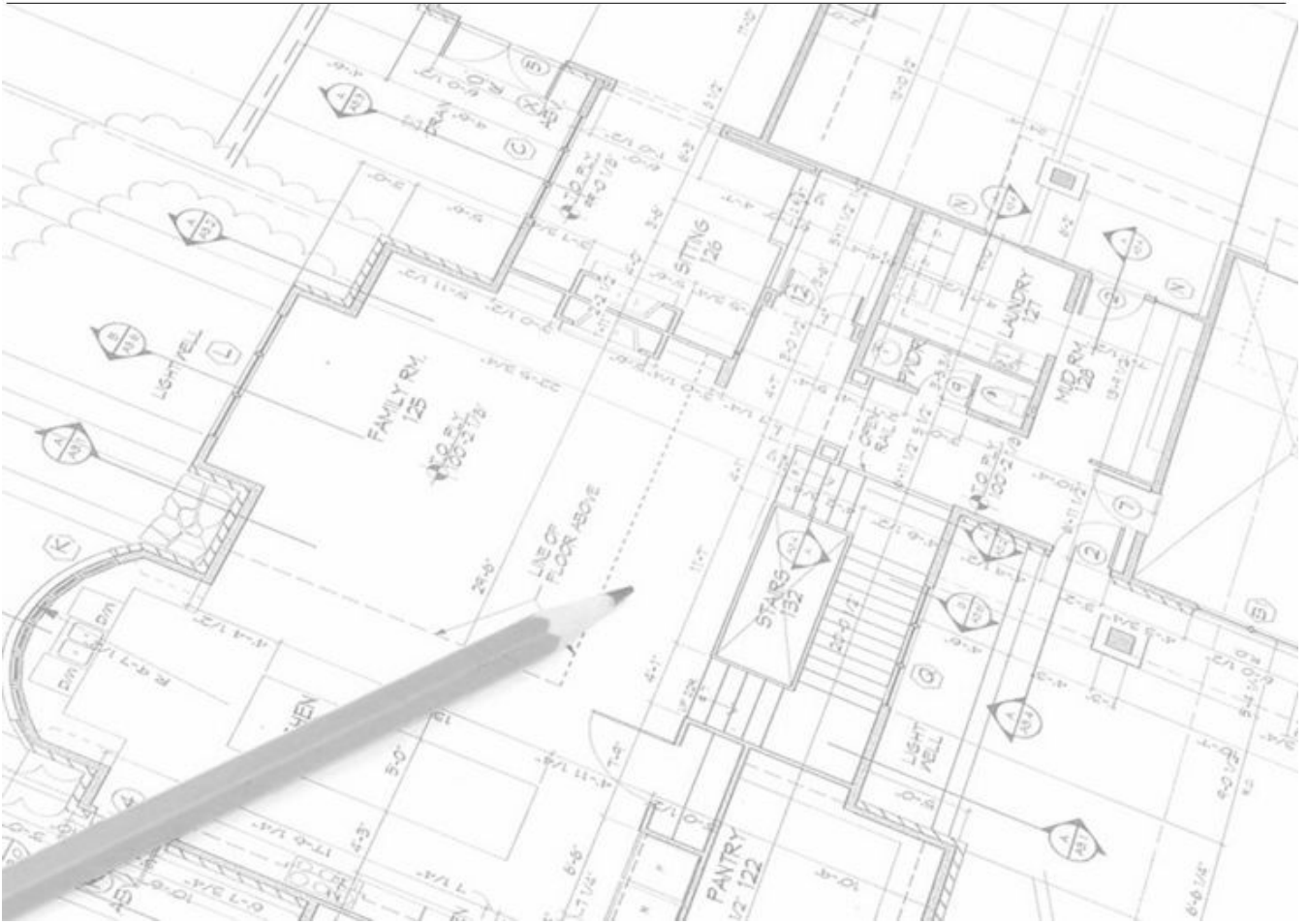
Color swatches provided by company

Southwest Power Pool Corporation, Little Rock, Arkansas - *Six large commissioned paintings.*

Founded as an 11-member tight power pool in 1941, Southwest Power Pool (SPP) achieved RTO status in 2004, ensuring reliable power supplies, adequate transmission infrastructure, and competitive wholesale electricity prices for its members. Based in Little Rock, Ark., SPP manages transmission in fourteen states: Arkansas, Iowa, Kansas, Louisiana, Minnesota, Missouri, Montana, Nebraska, New Mexico, North Dakota, Oklahoma, South Dakota, Texas and Wyoming.







Team of Artists

Winthrop P. Rockefeller Cancer Institute, Little Rock, Arkansas - *Painting Acquisition.*

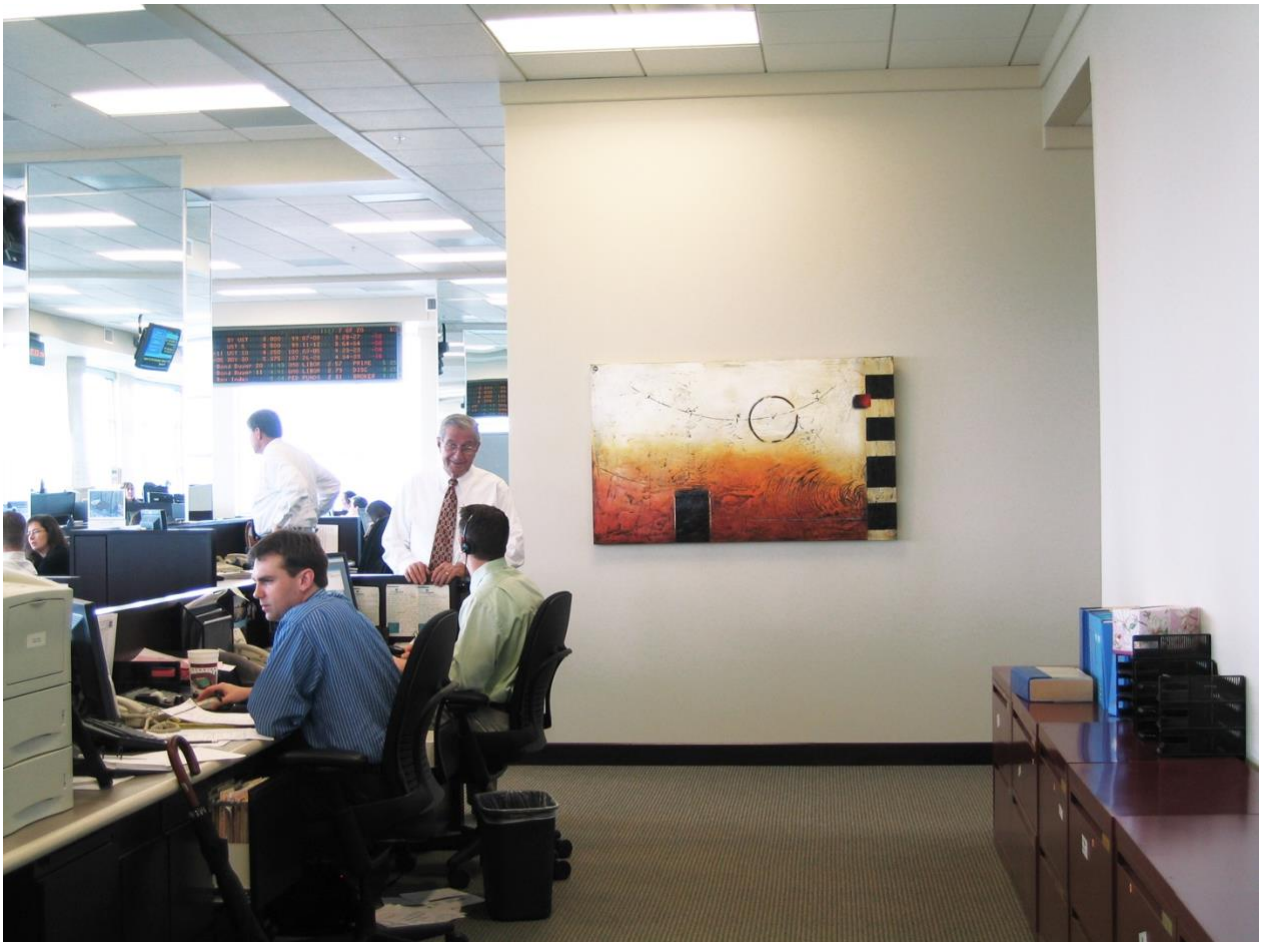
The Winthrop P. Rockefeller Cancer Institute is a center of excellence at the University of Arkansas for Medical Sciences. The Cancer Institute is Arkansas' premier cancer research and treatment facility. A 300,000-square-foot, 12-story expansion to the Cancer Institute opened in August 2010 and includes a large infusion clinic for patients to receive chemotherapy; a blood draw area; a 12-story atrium; additional research labs; and other areas. The Cancer Institute offers comprehensive medical treatment driven by state-of-the-art research to patients from every Arkansas county, all 50 states and about 40 foreign countries. It is Arkansas' only comprehensive cancer treatment and research facility.



Crews & Associates Corporation, Little Rock, Arkansas - 24 Commissioned Paintings.

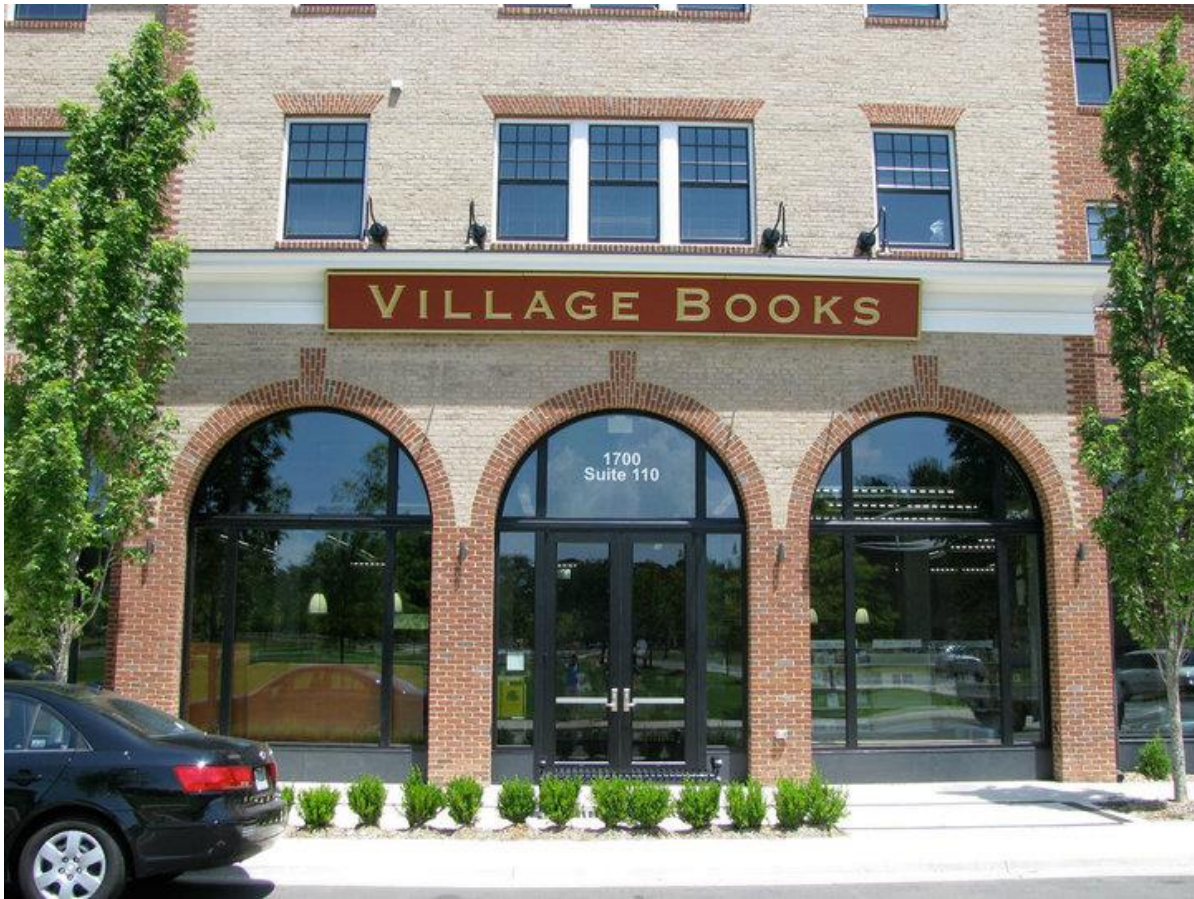
Crews & Associates, Inc. provides securities brokerage and investment banking services. It offers fixed income products, municipal and mortgage-backed securities, equities, certificates of deposit, preferred stocks, corporate bonds, U.S. treasury and federal agency issues, and lease finance. Additionally, the firm provides financing, underwriting, private placement, analytical, and advisory services. It caters to individuals, investment advisors, trust departments, bank and thrift portfolio managers, insurance companies, pension funds, and foundations. The firm was founded in 1979 and is headquartered in Little Rock, Arkansas. Crews & Associates, Inc. operates as a subsidiary of First Security Bancorp.





Trading room floor

Barnes and Nobles Bookstore, Hendrix Village





Additional examples of Hendrix Village placement layouts



Tyson Corporate World Headquarters - *Three Painting Acquisitions.* Tyson Foods is #80 on the 2017 Fortune 500 list and was recognized in 2017 by Fortune magazine as No. 1 on the World's Most Admired Companies list in the Food Production segment, moving up four places from the company's 2016 ranking. The company currently has approximately 114,000 Team Members employed at more than 400 facilities and offices in the United States and around the world.



Metropolitan National Bank Corporate Offices – 2 Large Commissioned Paintings.



OneBanc Corporate Office - 8 Commissioned Paintings.



Gill Ragon Owen, P.A. is a general practice law firm that emphasizes complex and general litigation, business transactions documentation, taxation and estate planning, privacy and data governance law, family law, employment law, insurance defense, and workers compensation defense. Our firm provides legal services for leading businesses, including utilities, commercial and investment banks, finance companies, and state and local government entities, individuals and charitable institutions.



Hardin Law Firm













